

CertaUPS

NETWORK MANAGEMENT CARD
A COMPLETE INSTALLATION AND USER
GUIDE FOR SNMP/HTTP INTERFACE

NETWORK MANAGEMENT CARD

An SNMP/ HTTP interface for the CertaUPS range of UPS systems.

www.certaups.com

For assistance please contact your local CertaUPS partner.

CONTENTS

HARDWARE INSTALLATION	5
CONFIGURATION	6
WINDOWS 10 SETUP	6
CNMC / UPS WEB INTERFACE	8
FINDING THE IP ADDRESS OF THE CNMC CARD IF PREVIOUSLY CHANGED	9
SYSTEM PROTECT SOFTWARE (SPS) SETUP	10
EMP CONNECTION (OPTIONAL).....	12

HARDWARE INSTALLATION

KEEP THESE INSTRUCTIONS IN A SAFE PLACE

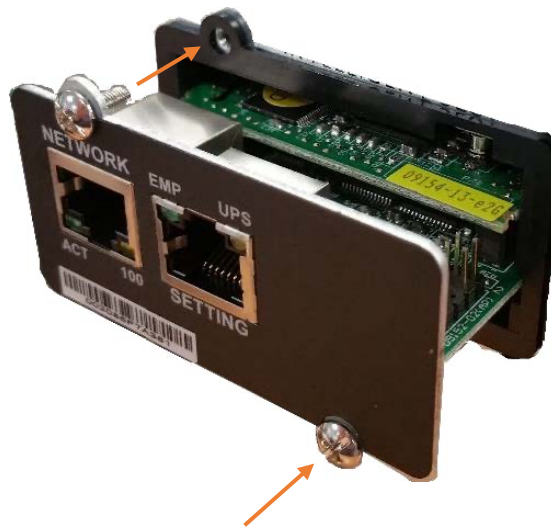
This section contains essential information and instructions that should be followed to ensure the safe handling, installation and maintenance of CertaUPS equipment

Required tools – Phillips Screwdriver 

STEP 1

BEFORE INSERTING THE NMC ENSURE UPS IS SWITCHED OFF

Remove the blanking plate from the intelligent slot on the rear of the UPS and insert the Network Management Card (CNMC) into the intelligent slot. Secure the CNMC card into place with the screws provided.

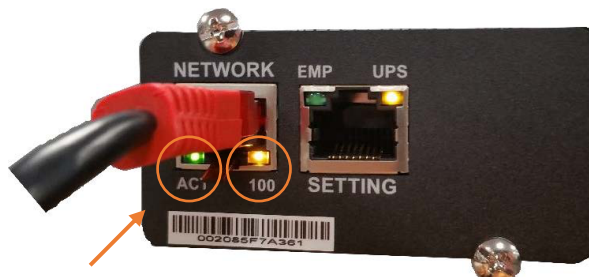


STEP 2

Connect the CNMC network port to either a LAN switch, or directly to the network port or a computer. (Direct connection may require a crossover cable*.)

*Crossover cable not included

The ACT and 100 LEDs should illuminate to indicate that a physical connection to another network device has been made. If the lights do not illuminate, ensure both ends are seated correctly and that the appropriate cable type has been used.



CONFIGURATION

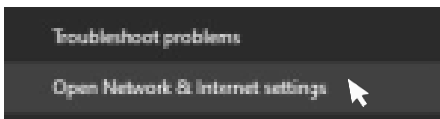
The default IP address of the CNMC is 10.10.10.10. To allow communication, the IP address of the connecting device must be brought into the range of the CNMC i.e., 10.10.10.11. This can be changed back to its original configuration later if necessary.

WINDOWS 10 SETUP

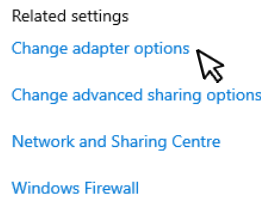
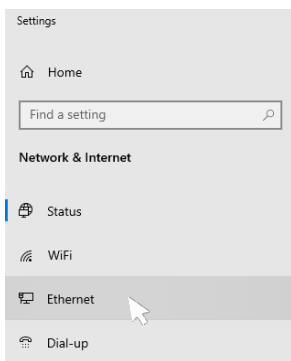
1. Right click the network icon located to the right of the task bar.



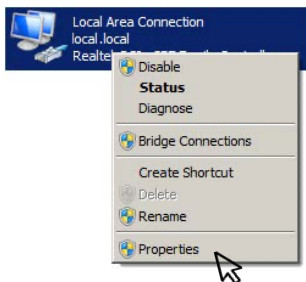
2. Select "open network and internet settings" from the menu.



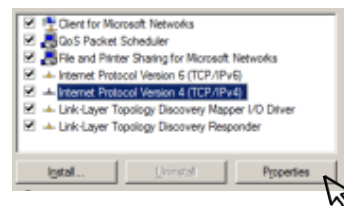
3. From the network and internet settings window select "ethernet" from the menu, followed by "change adapter options" from the menu on the right-hand side.



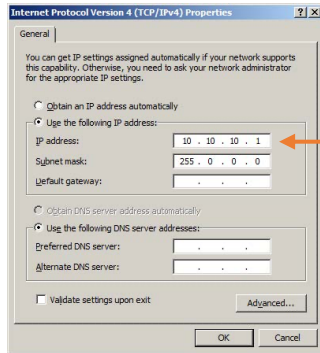
4. Right click the option of the adaptor being used for the connection and select "properties"



5. From the "connection properties" screen, click the line that states "TCP/IPV4" so it is highlighted in blue, and click the "properties" button below




- Only the IP address and Subnet mask are required to allow communication. This should be set to something in the same range (10.10.10.X) but not identical to the CNMC, or the IP addresses will be in conflict with one another.

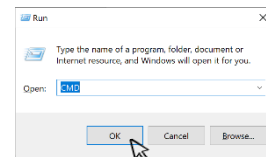


Make a note of any existing IP settings as they will need to be re-entered once configuration is complete. When changing these details, normal network connectivity will stop until returned to its initial state.

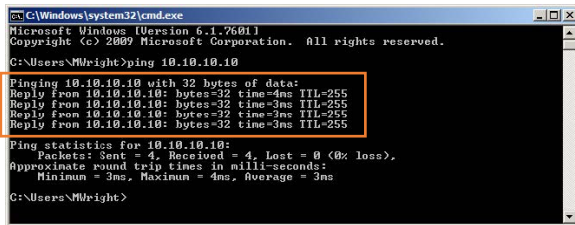
Once the IP information has been entered, select "OK" on the dialog boxes opened in step 5&6

- The PC should now be able to communicate with the CNMC, you can confirm this via a 'ping'.

Simultaneously press the  key + the 'R' key. This will load "Run" then within the run window, enter 'CMD' and click "OK".



Now type "PING 10.10.10.10" into the opened window and press enter. The test will run 4 times.*



*If the response is "reply from 10.10.10.10: bytes=32..." the configuration has been successful. Any other results are a failure in communication. Check the above steps.

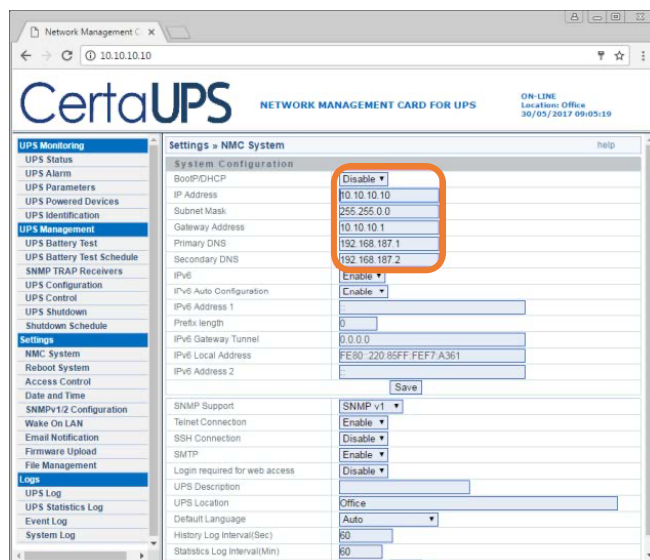
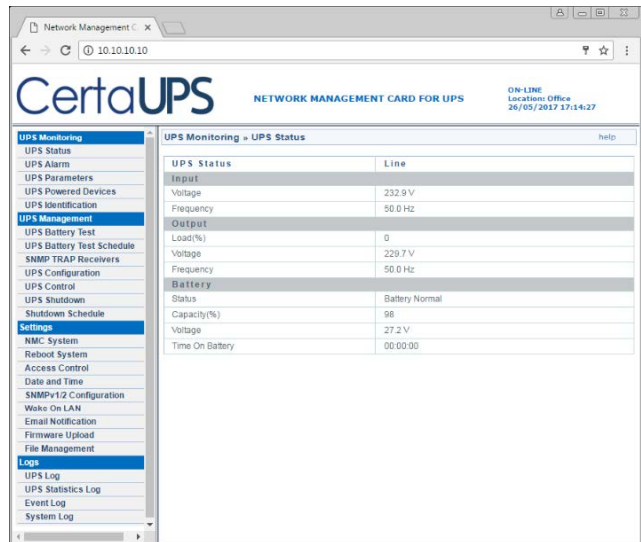
CNMC / UPS WEB INTERFACE

- Now the PC and CNMC/UPS are synchronised, key system information such as current status and settings configurations can be browsed in a webpage. To do this, open a web browser, enter the recently set IP of the CNMC (10.10.10.10) in the address bar of the browser to log onto the CNMC card.

**If the page fails to load properly, try an alternative browser.*

The default login details are

Username: root
Password: password



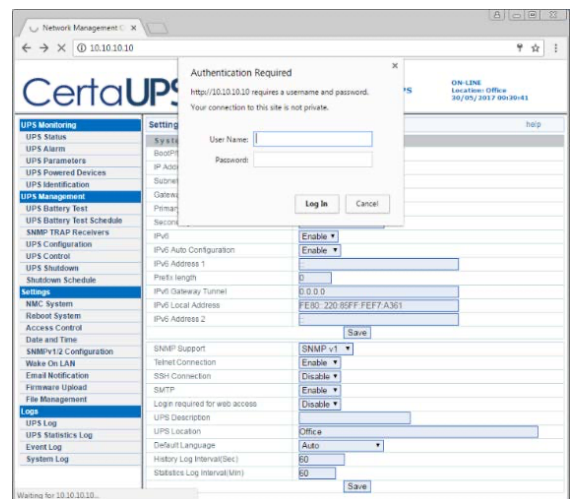
The IP address of the CNMC can be altered by clicking the "NMC System" button down the left menu bar.

**The required IP depends on the users LAN configuration. Contact the network administrator to confirm the necessary configuration.*

- When saving the amended CNMC network configuration the user might be prompted for authentication.

Configuration of the CNC IP address is now complete. Changes made during step 6 can be returned to their original values if necessary. *

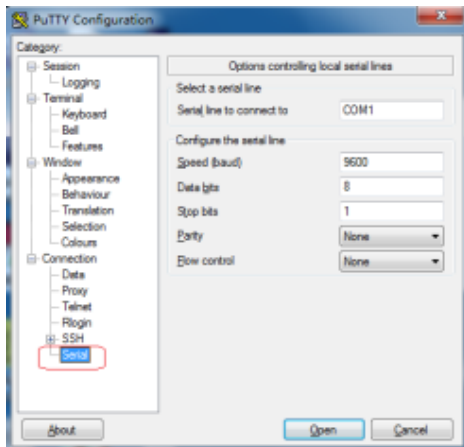
**Repeat step 7 using the new IP details to confirm that the CNMC has been configured successfully.*



FINDING THE IP ADDRESS OF THE CNMC CARD IF PREVIOUSLY CHANGED

If the IP address of the CNMC card has already been changed from the default 10.10.10.10 and the user is unable to connect to the CNMC over the network, the current IP and subnet mask settings can be read from the NMC to enable access.

1. Connect to the CNMC card's setter port using an RJ45 to DB9 serial connector. (The user might use a USB to serial adapter)
2. Open the serial terminal client on the PC, such as Hyper terminal, Tera Term or Putty.
3. Enter the following settings for a serial connection



4. Once the connection is established, the user will be prompted to enter the password. The default password is **password**

```
NMC Version X.X.X.X
-----
|           Network Management Card Configure Menu           |
-----
Password: _
```

5. After inputting the CNMC password, all main menus will be shown on the hyper terminal interface. Refer to the below diagram.

```
-----
|           Network Management Card Configure Menu           |
-----
1. IP Configurations
2. Pass Through
3. Reset Configuration to default
4. Restart
5. Change Password
0. Exit

Please Enter Your Choice :
```

6. From the main menu, selecting option 1 will display the current IP settings for the CNMC card.

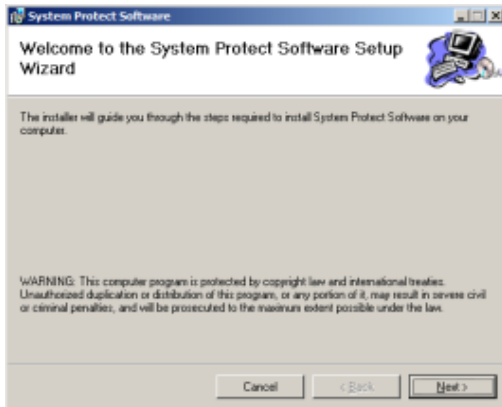
```
-----
|           IP Configure Menu                               |
-----
MAC Address : 00:20:85:F7:10:1F
1. DHCP      : Enable
IP address  : 172.18.127.42
Subnet mask : 255.255.255.0
Gateway     : 172.18.127.1
Primary DNS address : 172.18.121.17
Secondary DNS address : 151.110.232.21
7. IPv6 Configure
0. Return to previous menu

Please Enter Your Choice :
```

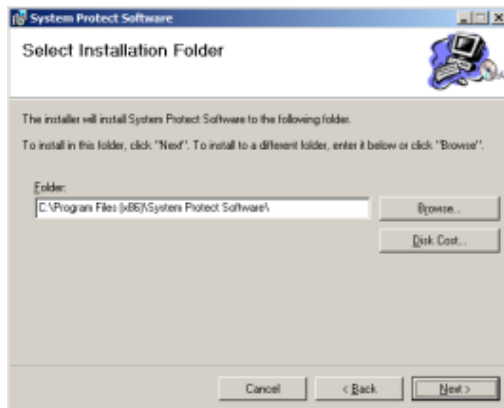
7. Once the IP address and Subnet mask details have been found, they can be used in the above 'configuration guide' to connect via a web browser.

SYSTEM PROTECT SOFTWARE (SPS) SETUP

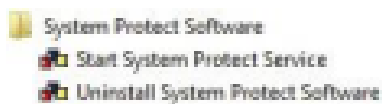
1. Double click the setup.exe icon to begin the installation process.




2. Choose a suitable directory to install the software into. It is advisable to leave this as its default directory.

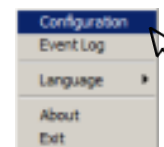


3. To start the SPS software, follow the directory path shown from the start menu (start > all programmes > System Protect Software > Start System Protect Software)

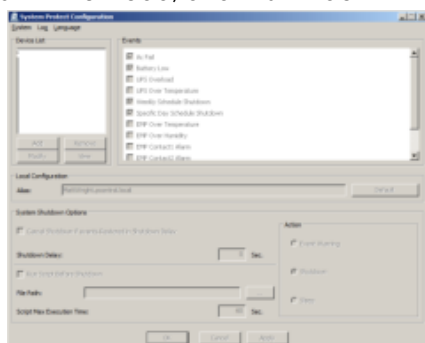


The system tray icon will then load ()

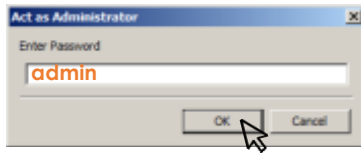
4. To configure, left click the SPS icon shown in the system tray and select "configuration"



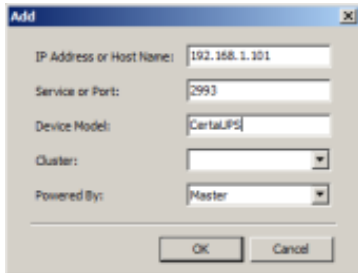
SPS will then load, and this window will open



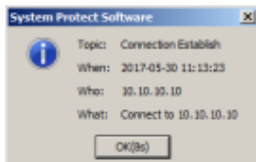
5. Select "system > act as administrator" the default password ("admin") will need to be inserted.



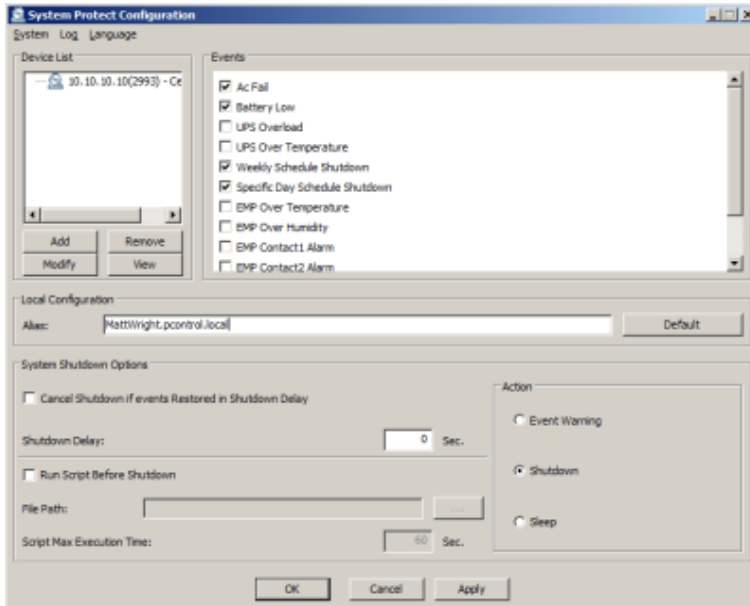
6. Within "device list" select Add.
Enter the CNC IP address chosen previously and device model.



7. If the connection was successful, a dialog box will confirm the details given.



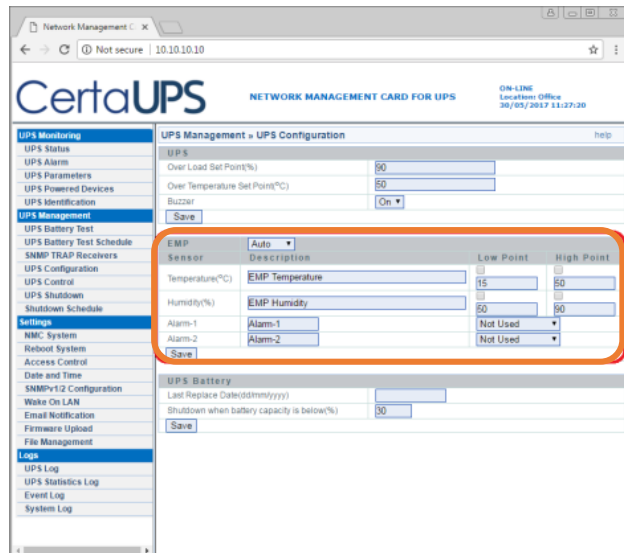
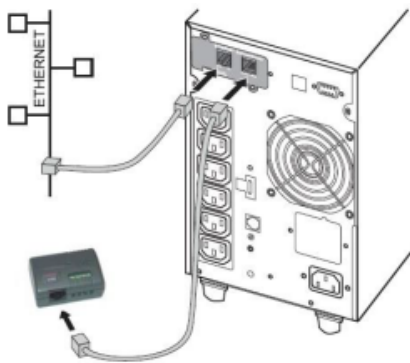
8. Once a connection has been established, the UPS shutdown and other parameters can be configured.



EMP CONNECTION (OPTIONAL)

The environmental monitor probe (EMP) is an NMC option. It monitors the temperature and humidity of the UPS environment and checks the state of two external contacts. It can also send alarms (email, trap) by pre-set thresholds. Connection is made via the setting port on the NMC, the EMP is detected automatically.

Configuration can be made via the UPS configuration menu.



* For further technical assistance, email techsupport@certups.com or subscribe to our [YouTube channel](#) for unboxing videos, quick start guides, and software screencasts.

www.certups.com